

# TOWN SQUARE OF VIA VERDE - P.U.D.

TRACT 24 · VIA VERDE · P.U.D.  
A PLAT OF A PORTION OF SECTION 23, TWP. 47 S., RGE. 42 E.  
PALM BEACH COUNTY, FLORIDA

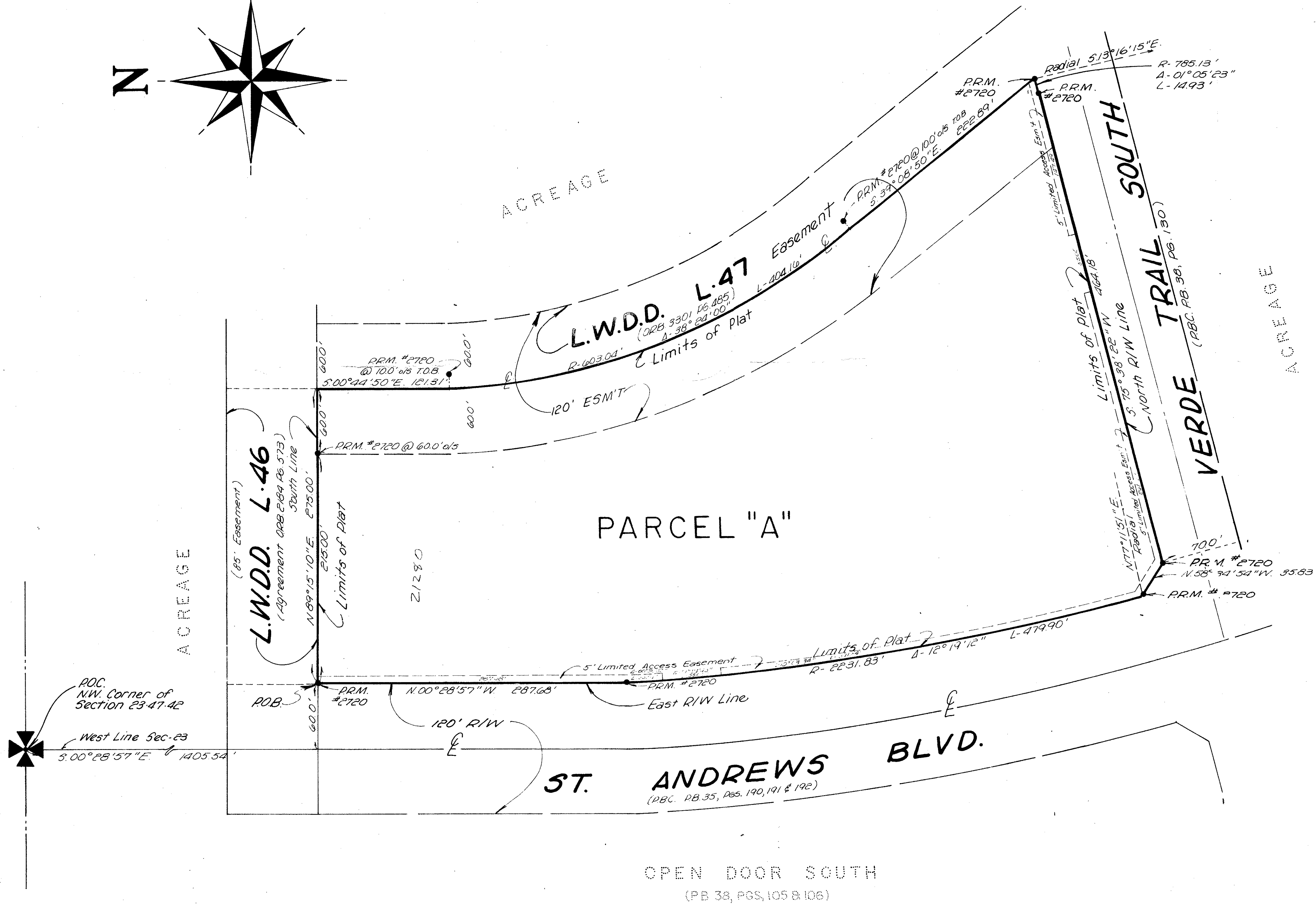
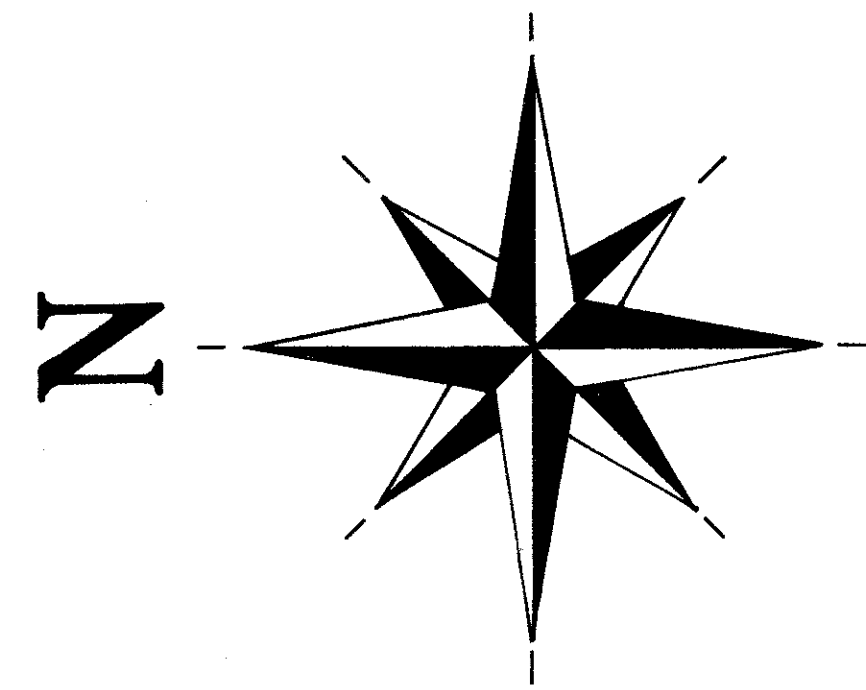
PREPARED BY:  
**MICHAEL G. PURMORT & ASSOCIATES, INC.**  
LAND SURVEYORS · PLANNERS  
1300 E. HILLSBORO BLVD., EXECUTIVE PLAZA, SUITE 202,  
DEERFIELD BEACH, FLORIDA, 33441

SHEET 2 OF 2

21

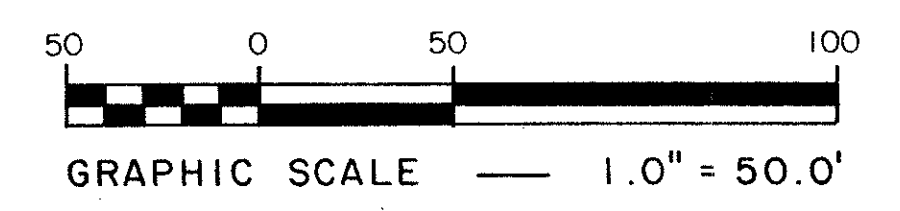
STATE OF FLORIDA  
COUNTY OF PALM BEACH  
This Plat was filed for record at \_\_\_\_\_  
this \_\_\_\_\_ day of \_\_\_\_\_, 1993,  
and duly recorded in Plat Book  
No. \_\_\_\_\_ on Page \_\_\_\_\_  
JOHN B. DUNKLE, Clerk Circuit Court  
By \_\_\_\_\_, D.C.

46/21



46/21

0323-306



TOWN SQUARE OF VIA VERDE  
PUD

OPEN DOOR SOUTH  
(PB 38, PGS. 105 & 106)